

# Finding your way around (Part 1)

---

P.4 Unit 2 (2<sup>nd</sup> Term)





# Vocabulary – Places in the street

---

- a post office

- a police station

- a fire station

- a hospital

- a clinic

- a bakery

- a convenience store

- a health and beauty store

- a department store

- a news-stand

- a learning centre

- a sports centre





# Online homework

---

Please go to iLearn app and submit your online assignments!

P4 U2 – Vocabulary 1

P4 U2 – Vocabulary 2



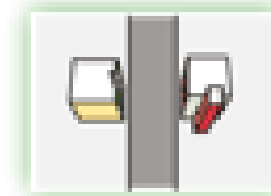
## Part 1

In this part, you will learn to use prepositions to talk about locations.

The post office is **next to** the fire station.



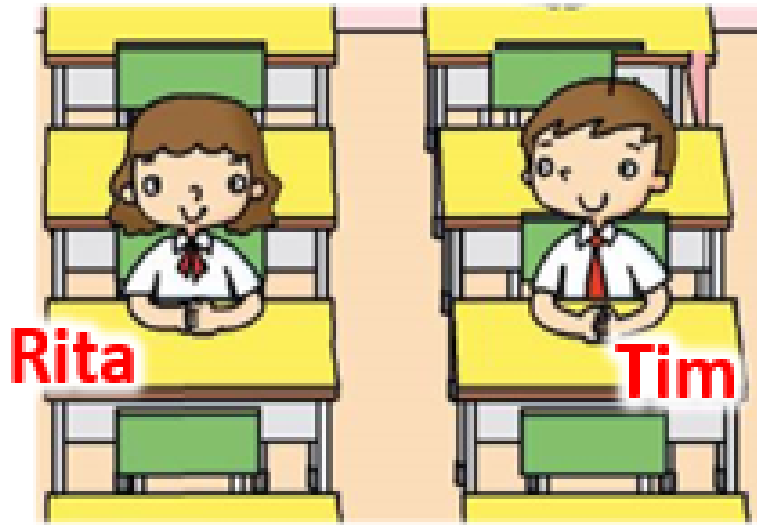
The post office is **opposite** the fire station.



The post office is **on your left / right**.



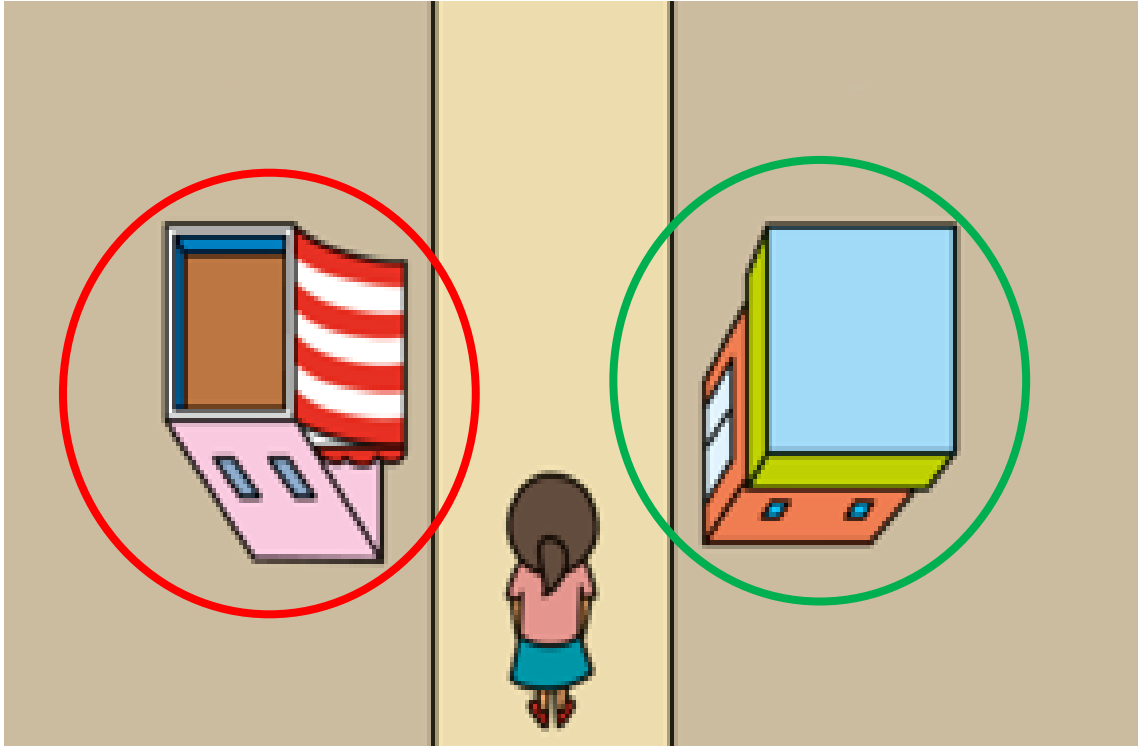
We can use prepositions to talk about where someone is.



Rita sits next to Tim.

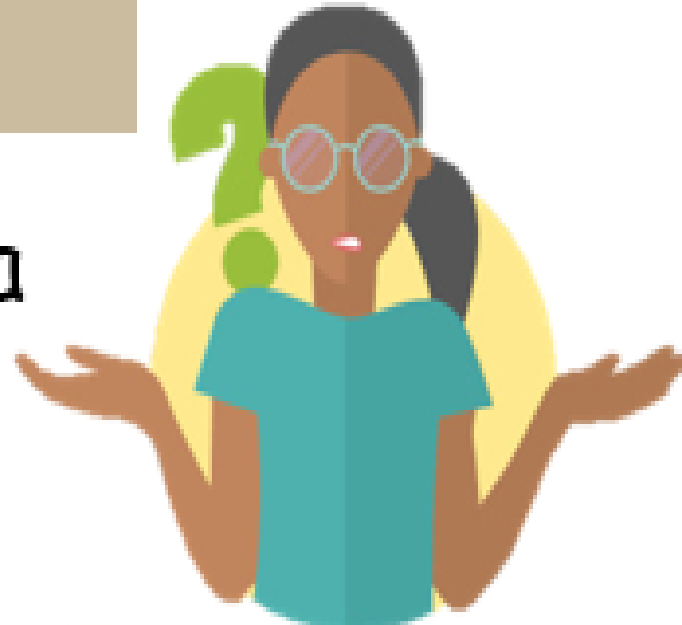
**Let's try to use prepositions to talk about places around town!**





There is a bakery and a convenient store.

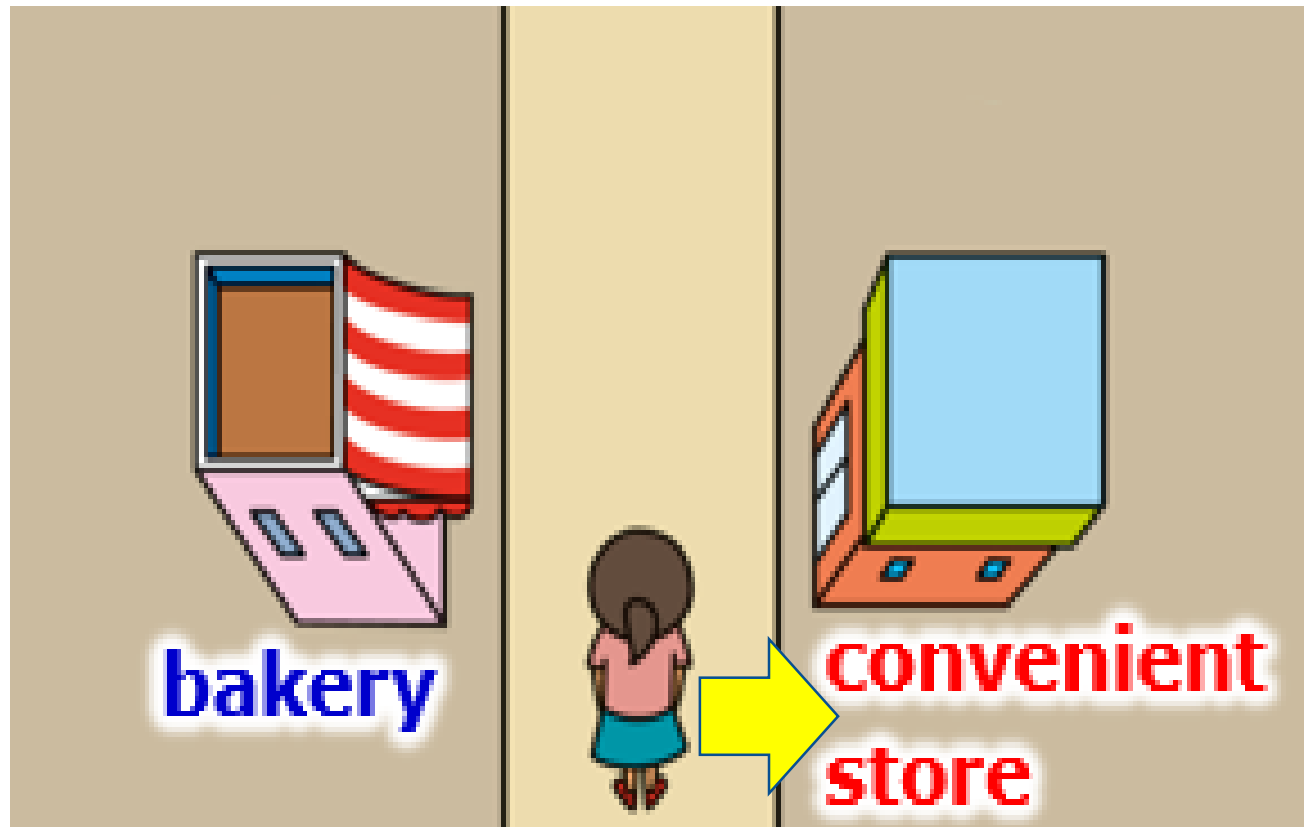
**Where?**





The bakery is on your left.





The bakery is **on your left**.

The convenient store is **on your right**.







The convenient store

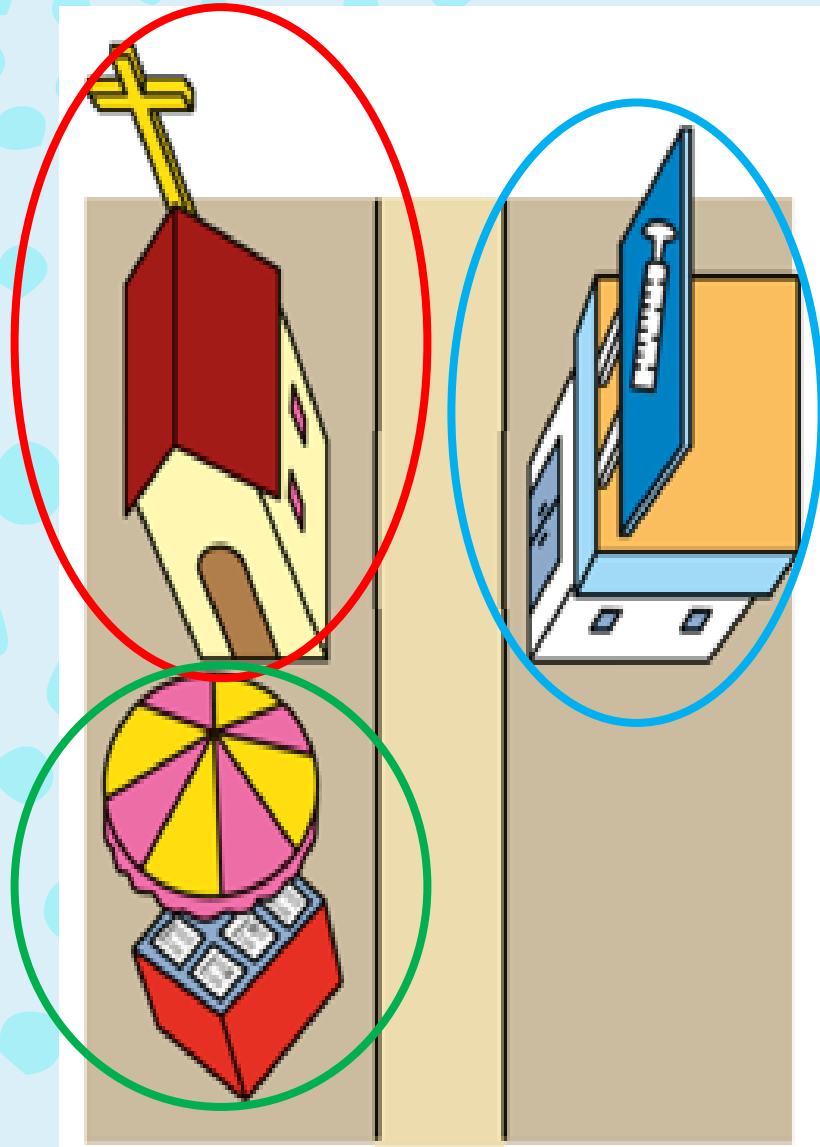
The convenience store



The bakery is **on your left**.

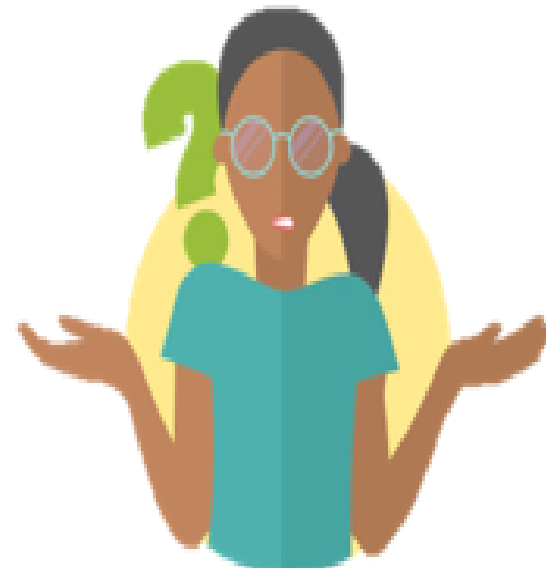
The convenient store is **on your right**.

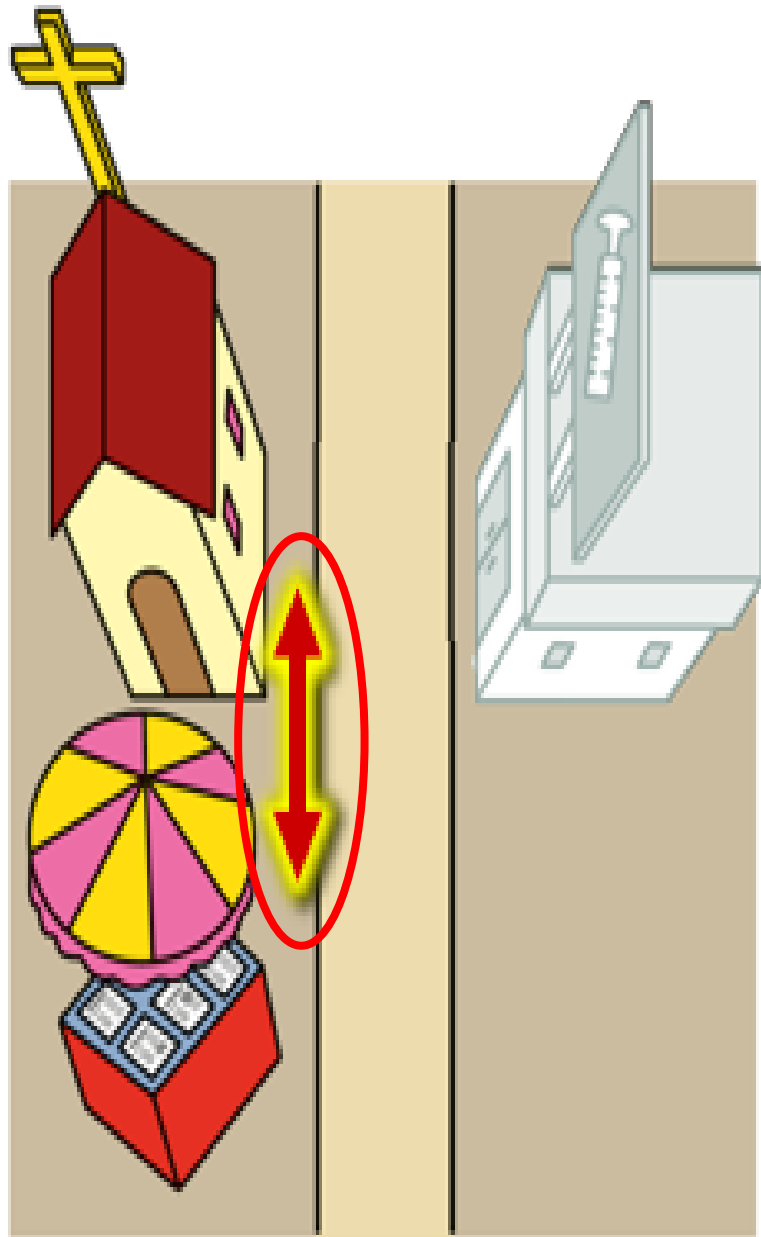




There is a church, a news-stand and a clinic.

**Where?**



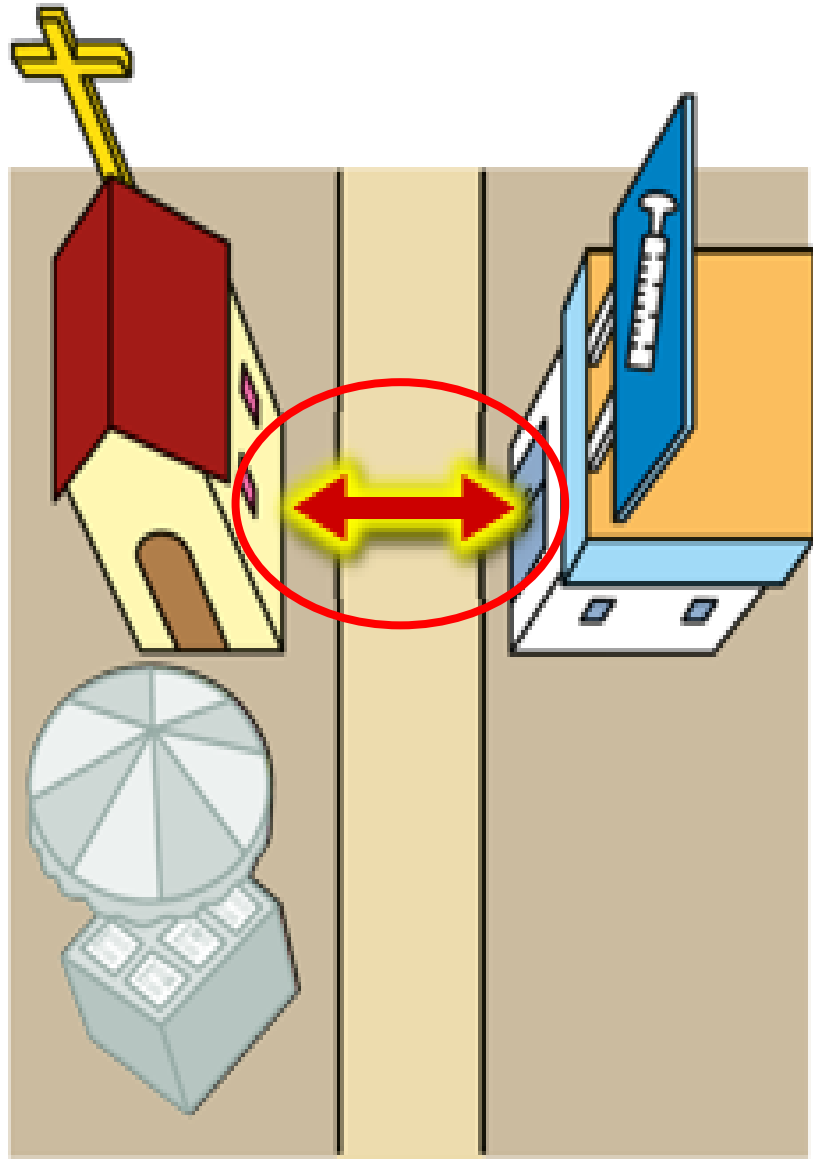


The church is next to the news-stand.

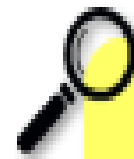


The church and the news-stand are on the same side of the street.





The church is opposite the clinic.



The clinic is on the other side of the street.

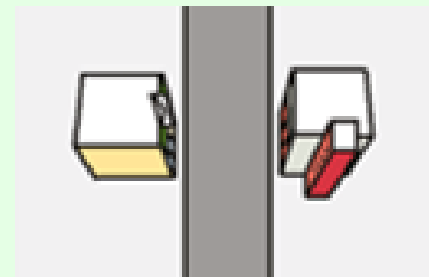


# Review

The post office is **next to** the fire station.



The post office is **opposite** the fire station.



The post office is **on your left**.  
The fire station is **on your right**.

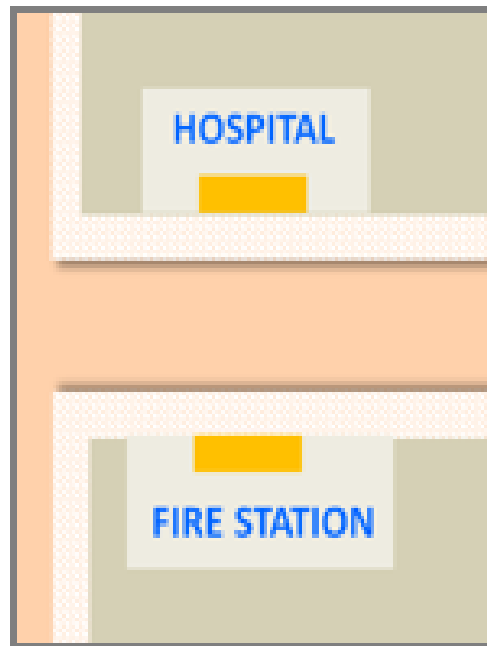


# Quick Check

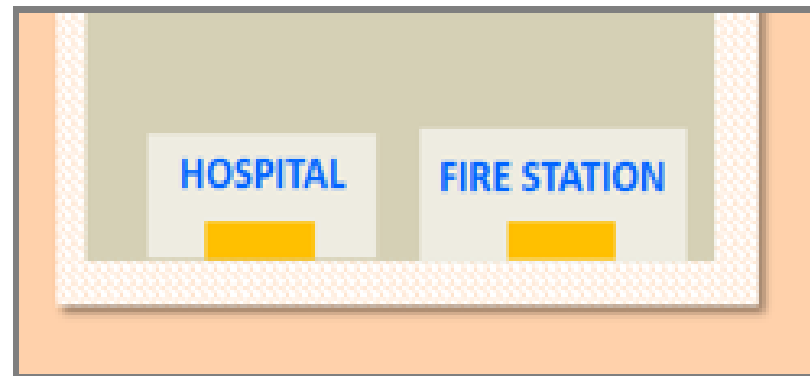
1. Which is the correct picture?

**The hospital is next to the fire station.**

A.



B.



# Quick Check

2. Which is the correct picture?

**The bakery is on your left.**

A.



B.





# Online homework

---

Please go to iLearn app and submit  
your online assignment!

P4 U2 – Grammar 1







# Have you talked to Mr Whitmore today?

---



# SEE YOU NEXT WEEK!

---

\*Teaching resources are adapted from Pearson Longman Leap Grammar ppt



This Photo by Unknown Author is licensed under [CC BY-NC-ND](#)

